



Australian Hammer Supplies Hire
Unit 3/32 Williamson Road
Ingleburn
NSW 2565

Minor Service

RP044376

Customer AUSTRALIAN HAMMER SUPPLIES HIRE Resource Shabaz Muhunned

Contact

Address AUSTRALIAN HAMMER SUPPLIES HIRE
Unit 3/32 WILLIAMSON RD

INGLEBURN
2565

Job Type Minor Service
Reference
Date 2024-10-15 13:57 - 14:01

Job duration 2:0:00
Driving duration 00:00:00
Distance travelled 0 km

Notes 50HR MINOR SERVICE

Customer/Technician

Resource notes

Replaced engine oil engine oil filter

Minor Service

Answer

Notes

Additional notes yes

Change fuel filter no

Change gear oil (litres used) 0

Change oil filter yes

Change outer air filter no

Check hand controls operational Yes

Check slew (full travel and smooth operation) Yes

Check the hydraulic motor and the control block for oil leaks. Yes

Foot pedals (operate correctly) Yes

Gauges (operate correctly) Yes



Australian Hammer Supplies Hire
Unit 3/32 Williamson Road
Ingleburn
NSW 2565

General check/adjust driver belts	Yes
General inspections/safety checks	yes
General inspections/safety checks	yes
Grease & Lubricate Pins & bushes	Yes
Grease all nipples	yes
Hand controls (operate correctly)	Yes
Handbrake (functional)	yes
Inspect track tension	0
Inspect/top up coolant (litres used)	0
Meter Reading	111
Operational inspection controls and safety locks Air conditioner/heater	Yes
Operational inspection controls and safety locks Attachment controls	Yes
Operational inspection controls and safety locks Battery charger rate	Yes
Operational inspection controls and safety locks Engine shut off	Yes
Operational inspection controls and safety locks Engine speed high	Yes
Operational inspection controls and safety locks Engine speed low idle	Yes
Operational inspection controls and safety locks E-STOPS	Yes
Operational inspection controls and safety locks Flow test hyd system(Ref. WSM)	Yes
Operational inspection controls and safety locks Horn hazard & warning devices	Yes
Operational inspection controls and safety locks Hour & tachometer	Yes
Operational inspection controls and safety locks Hydraulic auxiliary operation	Yes
Operational inspection controls and safety locks Instruments & Gauges	Yes
Operational inspection controls and safety locks Lights - Interior	Yes
Operational inspection controls and safety locks- Lights head,signal, stop & work	Yes
Operational inspection controls and safety locks Lights-warning	Yes
Operational inspection controls and safety locks	Yes



Australian Hammer Supplies Hire
Unit 3/32 Williamson Road
Ingleburn
NSW 2565

Main relief pressure check: PSI =

Operational inspection controls and safety locks No	Yes
coolant leaks	

Operational inspection controls and safety locks No	Yes
exhaust leaks	

Operational inspection controls and safety locks No	Yes
fuel system leaks	

Operational inspection controls and safety locks No	Yes
oil leaks	

Operational inspection controls and safety locks	Yes
Quick hitch	

Operational inspection controls and safety locks	Yes
Safety interlock function	

Operational inspection controls and safety locks	Yes
Seat belt operation & mounting	

Operational inspection controls and safety locks	Yes
Set clock & audio system	

Operational inspection controls and safety locks	Yes
Set service intervals	

Operational inspection controls and safety locks-	Yes
Switches & controls	

Operational inspection controls and safety locks	Yes
Verify relief valve setting (attach)	

Operational inspection controls and safety locks	Yes
Windscreen wipers & washers	

Pre cleaner, cabin filter and outer air filter take out	Yes
and blow out - Actioned?	

Tracks check/adjust track tension	Yes
-----------------------------------	-----

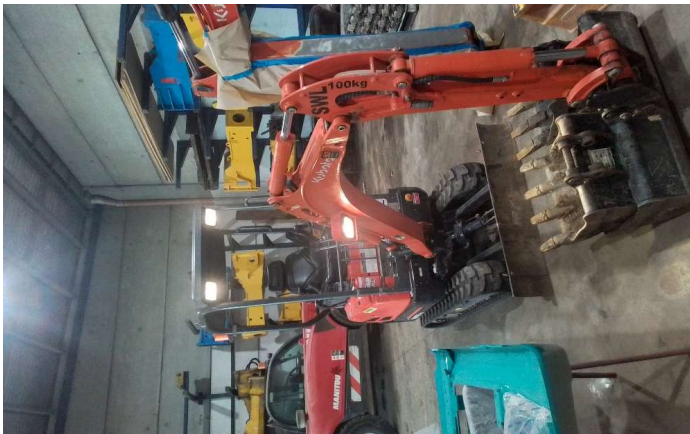


Australian Hammer Supplies Hire
Unit 3/32 Williamson Road
Ingleburn
NSW 2565

Plant No.



Overall View - Right hand side



Tyre Condition 1



Tyre Condition 2



Tyre Condition 3





Australian Hammer Supplies Hire

Unit 3/32 Williamson Road

Ingleburn

NSW 2565

Tyre Condition 4

